

Gunderson

FAMILY COMPANIES
Helping You Build a Better Community



70 years

Gunderson

UNIFORM & LINEN RENTAL
HEALTH CARE LINEN SERVICE





Our guarantee is a simple one: You will be completely satisfied with the products and services you receive from our team of family-owned businesses.

In 1952, Gunderson Cleaners was established by Douglas E. Gunderson, with one dry cleaning location. In 1989, Gary Gunderson purchased the business from his father and has continued to expand the company. Today, Gunderson Family Companies is a 3rd generation, family owned business providing dry cleaning, health care laundry, uniform rental, textile restoration, embroidered and screen printed apparel and promotional products.

With over 60 years of experience, Gunderson is the expert in dry cleaning, laundry, fabric restoration, and your professional image.



Douglas Gunderson (1967)



Gary Gunderson



Doug Gunderson



Greg Gunderson



Sara Gunderson



INDEX

SHIRTS.....	4-9
PANTS.....	10-13
OUTERWEAR-DIRECT SALE	14-15
HI-VISIBILITY/ E-VISIBILITY	16-17
COVERALLS.....	18
FLAME RESISTANT GARMENTS.....	19-22
WALKMATS.....	23-28
RECYCLABLE OIL ABSORBENTS	29
SHOP TOWELS & APRONS	30-31
RESORT & LODGING RENTAL PROGRAM.....	32-33
LINEN & BANQUET.....	34-37
HOSPITALITY/ CULINARY.....	38-41
SERVICE TOWELS.....	42
RESTROOM SUPPLIES	43
JANITORIAL.....	44
HEALTHCARE.....	45-49
DIRECT SALE	50-51

4 | SHIRTS



INDUSTRIAL COLOR BLOCK SHIRTS

FEATURE:



Moisture wicking

Color retention

Top stitched collar

Easy care stain release

Talored fit for women

Lined two-piece collar with permanent stays

StayDark technology for superior color fastness

Generous cut through shoulders and chest

Button closure at neck

Less drying time

Side vent

Dickies logo

Men's short sleeve polo
SPPCB-DK

Talored fit for women

Mitered front pockets with pencil division on left pocket

Men's long sleeve shirt
SILS-DK

Dickies logo

Square tail design stays tucked in or looks good untucked





**DICKIES INDUSTRIAL LONG SLEEVE
COLOR BLOCK SHIRT**

SILS-DK

- 4.25 oz. Permanent Press Poplin; 65% Polyester/35% Cotton
- Available in Black/Charcoal, Black/English Red, Dark Navy/Smoke



**DICKIES SHORT SLEEVE INDUSTRIAL
COLOR BLOCK SHIRT**

SISS-DK

- 4.25 oz. Permanent Press Poplin; 65% Polyester/35% Cotton
- Available in Black/Charcoal, Black/English Red, Charcoal/Royal Blue, Dark Navy/Smoke



**DICKIES INDUSTRIAL COLOR BLOCK
PERFORMANCE POLO**

SPPCB-DK

- Micro Pique; 100% Polyester
- Available in Black/Charcoal, Black/English Red, Dark Navy/Smoke



SPSS

- Also Available in Solid Colors: Black, Dark Navy, English Red, and White



**DICKIES WOMEN'S INDUSTRIAL LONG
SLEEVE COLOR BLOCK SHIRT**

SIWLS-DK

- 4.25 oz. Permanent Press Poplin; 65% Polyester/35% Cotton
- Available in Black/Charcoal, Black/English Red, Dark Navy/Smoke



**DICKIES WOMEN'S INDUSTRIAL SHORT
SLEEVE COLOR BLOCK SHIRT**

SIWSS-DK

- 4.25 oz. Permanent Press Poplin; 65% Polyester/35% Cotton
- Available in Black/Charcoal, Black/English Red, Dark Navy/Smoke



**DICKIES WOMEN'S INDUSTRIAL
COLOR BLOCK PERFORMANCE POLO**

SWP-FS424

- Micro Pique; 100% Polyester
- Available in Black/Charcoal, Black/English Red, Dark Navy/Smoke





**RED KAP INDUSTRIAL STRIPE
WORK SHIRT**
Long Sleeve **SULSS-SL50**
Short Sleeve **SUSSS-SL60**

– Shown in **GI** (Charcoal with Blue/White)



**INDUSTRIAL COTTON
WORK SHIRT**
Long Sleeve **SCLS-DK**
Short Sleeve **SCSS-DK**

- 6oz. Twill; 100% Cotton
- Resist Wrinkles
- Fits close to the body
- Lined two piece collar with permanent stays and button closure
- Available in Navy, Black



**RED KAP MICROCHECK
UNIFORM SHIRT**
Long Sleeve **SMCLS-RK**
Short Sleeve **SMCSS-RK**

- 3.5 oz. Poplin; 65% Polyester/35% Cotton
- *Long Sleeve & Short Sleeve
- Available in Blue/Charcoal, Hunter/Khaki, Khaki/Black



**DICKIES INDUSTRIAL SHORT
SLEEVE WORK SHIRT**
Long Sleeve **SSILS-DK**
Short Sleeve **SSISS-DK**

- Fade-resistant Poly/Cotton Poplin
- Industrial laundry-friendly design & construction
- Available in Navy, Black, Graphite, Light Blue





"We now have over 150 uniform wearers since switching to Gunderson's RFID tracking program and I have not had one single complaint! Our staff loves their uniforms! I used to deal with uniform shortages, erratic billing, and poor quality issues with our previous supplier."
 — Dan Weinberger, Fall River Foundry

RFID (Radio Frequency Identification)

Gunderson's RFID sorting technology is the answer to tracking your teams' uniforms, reducing shortages, and ensuring 100% accurate delivery!



◀ Scan the QR Code to watch a video and learn more about our RFID Technology



MOST POPULAR ITEM!

DICKIES INDUSTRIAL RELAXED FIT STRAIGHT LEG COMFORT WAIST PANT PL-DK

- 7.75 oz. Twill; 65% Polyester/35% Cotton
- Sits slightly below waist, extra room in seat and thigh, straight leg
- Available in Black, Navy, Desert Sand
- Also available in women's sizes





DICKIES INDUSTRIAL RELAXED FIT CARGO PANT

PC-DK

- 7.5 oz. Twill; 65% Polyester/35% Cotton
- Sits slightly below waist, extra room in seat and thigh, straight leg
- Available in Black, Navy, Desert Sand



DICKIES PREMIUM COTTON FLAT FRONT PANT

PC-DKWP314

- 8 oz. Twill; 100% Cotton
- Casual Waistband
- Available in Black, Dark Navy, Military Khaki



INDUSTRIAL PLEATED WORK PANT

PP-RK

- 7.5 oz. Twill; 65% Polyester/35% Cotton
- Two slack-style front pockets, two set-in hip pockets, left has button closure, darts over hip pockets for better fit
- Available in Black, Navy, Khaki, Charcoal



DICKIES INDUSTRIAL CARPENTER DENIM JEAN

PJCRF-DK

- 14 oz. Heavyweight Denim; 100% Cotton
- Sits slightly below waist, extra room in seat and thigh, straight leg
- Available in Rinsed Indigo Blue



INDUSTRIAL RELAXED FIT DENIM JEANS

- 14 oz. Heavyweight Denim; 100% Cotton
- Rinsed Indigo Blue
- Sits slightly below the waist, extra room in seat and thigh, straight leg



DICKIES INDUSTRIAL REGULAR FIT DENIM JEAN

- 13.75 oz. Premium Denim; 100% Cotton
- Sits slightly below waist, traditional fit in seat and thigh, straight leg
- Available in Rinsed Black, Rinsed Indigo



DICKIES INDUSTRIAL RELAXED FIT STRAIGHT LEG CARPENTER DUCK JEAN

PJICD-DK

- Duck; 75% Cotton/25% Polyester
- Available in Rinsed Brown Duck, Rinsed Navy





**RED KAP PERMA-LINED
PANEL JACKET**
COG-J-RK-JT50

- 7.5 oz. Twill; Shell: 65% Polyester/35% Cotton
Lining: 100% Polyester
- Available in Black, Brown, Charcoal, Navy
Spruce Green



**RED KAP
HEAVYWEIGHT PARKA**

PH-RK

- Shell: 65% Polyester/35% Cotton, Lining: 100%
Polyester, Insulation: 100% Polyester
- Available in Black, Navy



**RED KAP SOLID TEAM
LINED JACKET**

COG-J-RKJT38

- 7.5 oz. Twill; Shell: 65% Polyester/35% Cotton
Lining: 100% Polyester
- Available in Black, Charcoal, Navy, Spruce Green



**RED KAP
QUILTED VEST**

VQ-RK

- 7.5 oz. Twill; Shell: 65% Polyester/35% Cotton
Lining: 100% Polyester
- Available in Charcoal, Navy



**RED KAP
SLASH POCKET JACKET**
JSP-RK

- 7.5 oz. Twill; 65% Polyester/35% Cotton
- Available in Black, Brown, Charcoal, Navy,
Spruce Green



**THE NORTH FACE APEX
BARRIER SOFT SHELL JACKET**

- 100% Windproof fabric with DWR finish
- Brushed fleece interior
- Available in Asphalt Grey, TNF Black, TNF Medium
Grey Heather, Urban Navy



**EDDIE BAUER
RAIN JACKET**

- 100% Polyester dobby shell, mesh body lining, 100%
nylon accents
- Available in Black/Steel Grey, Deep Sea Blue/Dark
Adriatic, Radish/Grey Steel, River Blue/Grey Steel



**NIKE 1/2 ZIP
WIND SHIRT**

- 5.1 ounce, 100% Polyester
- Available in Black/Dark Grey,
Dark grey/Black, Gym Blue/Black,
Lucky Green/Black



**OGIO ENDURANCE
LADIES PIVOT SOFT SHELL**

- Water and wind resistant, 100% Polyester
interlock with a laminated film insert for
wind and water resistance
- Available in Blacktop/Gear Grey, Flush Pink/
Blacktop



**THE NORTH FACE LADIES
THERMOBALL TREKKER JACKET**

- 7.5 oz. Twill; 65% Polyester/35% Cotton
- Available in Fire Brick Red, Mid Grey, TNF Black,
TNF White Woodchip Print





**RED KAP HI-VISIBILITY COLOR BLOCK
WORK SHIRT: CLASS 2 LEVEL 2**

#SY24YG

- 4.25 oz. Ripstop; 65% Polyester/35% Cotton
- Available as shown



**PORT AUTHORITY ENHANCED
VISIBILITY VEST**

SV01

- Combines reflective taping with a fluorescent body color for high visibility. Non-ANSI
- Available in Safety Orange/Reflective, Safety Yellow/Reflective



**RED KAP SHORT SLEEVE HI-VISIBILITY
WORK SHIRT: CLASS 2 LEVEL 2**

SWHVSS-RK

- 5 oz. Poplin; 100% Polyester
- Available in High Viz, Safety Orange



**RED KAP LONG SLEEVE HI-VISIBILITY
WORK SHIRT: CLASS 2 LEVEL 2**

#SS1402

- 5 oz. Poplin; 100% Polyester
- Available in High Viz, Safety Orange



**RED KAP LINED BOMBER JACKET
WITH REFLECTIVE TRIM**

#JNJTRB

- Flame-Resistant, 6 oz. Water Repellent NOMEX IIIA Rip Stop Lining-Flame Resistant, 3.2 oz. Nomex IIIA
- Available in Royal Blue



**RED KAP
HI-VISIBILITY BOMBER**

#JY38HVB

- 7.5 oz. Twill; 100% Polyester



**RED KAP TWILL ACTION
BACK COVERALL**

CVCP-RK

- 7.25 oz. Twill; 65% Polyester/35% Combed Cotton
- Available in Black, Charcoal, Navy, Spruce Green



**RED KAP
SHOP COAT**

CS-RK

- 7.5 oz. Twill; 65% Polyester/35% Combed Cotton
- Available in Charcoal, Navy, Postman Blue



**RED KAP BUTTON FRONT 100%
COTTON COVERALL**

CVC-RK

- 10 oz. Fisher Cloth or 8.5 oz. Twill; 100% Cotton
- Available in Fisher Herringbone, Navy



**BULWARK PLAID
DRESS SHIRT**

SFRLSPd-SLG8

- ATPV 8.7 calories/cm2 (CAT 2)
- 6 oz. 88% Cotton/12% Nylon
- Available in Red/Khaki, Hunter/Navy



**BULWARK BUTTON-FRONT
WORK SHIRT**

SFRLSP-BWK

- ATPV 8.6 calories/cm2 (CAT 2)
- 7 oz. 88% Cotton/12% Nylon
- Available in Khaki, Navy, Light Blue



**BULWARK LONG SLEEVE
CLASSIC POLO**

SPFRLS-BWK

- ATPV 8.1 calories/cm2 (CAT 2)
- 6.5 oz. 45% Modacrylic/35% Lyocell/20% Aramid
- Available in Navy as shown

**BULWARK EXCEL FR
WORK COAT**

CWLFR-RK

- ATPV 11 calories/cm² (CAT 2)
- Flame-Resistant 9 oz. 100% Cotton Twill
- No Exposed Metal
- Inside Chest Pocket
- Available in Visual Green as shown



**BULWARK EXCEL FR
PREMIUM COVERALL**

CVFRP-BWK

- Westex Ultrasoft Flame-Resistant 7 oz. (CAT 2)
- 88% Cotton/12% Nylon
- Available in Navy, Khaki, Royal Blue



**BULWARK EXCEL FR COMFORTOUCH
DRESS UNIFORM SHIRT**

SFRLS-SLU2

- ATPV 8.6 calories/cm² (CAT 2)
- 7 oz. 88% cotton/12% nylon
- Available in Khaki, Navy, Light Blue



**BULWARK COOL TOUCH 2
DRESS UNIFORM SHIRT**

SFRLS-SMU2

- ATPV 9.0 calories/cm² (CAT 2)-Khaki & Light Blue
- ATPV11 calories/cm² (CAT 2)-Navy Only
- Gusset side seam for ease of movement
- Straight back yoke
- 7.0 oz. 48% Modacrylic/37% Lyocell/15% Aramid
- Available in Khaki, Navy, Light Blue



**BULWARK MEN'S CARGO POCKET
WORK PANT**

PFRCGO

- ATPV 8.4 calories/cm² (CAT 2)
- Flame-resistant, 7 oz. 45% Modacrylic/35% Lyocell / 20% Aramid
- Available in Navy as shown



**BULWARK
MEN'S WORK PANT**

PFR-PLW2

- ATPV 12.2 calories/cm² (CAT 2)
- Westex Ultrasoft Flame-resistant 9 oz. Twill 88% Cotton / 12 % Nylon
- Available in Navy as shown



**BULWARK EXCEL FR
RELAXED FIT DENIM JEAN**

PFRJRF-BWK

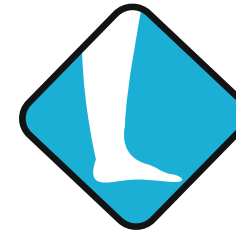
- ATPV 18.0 calories/cm² (CAT 2)
- Flame-Resistant, 12.5 oz. 100% Cotton Indigo Denim
- Relaxed seat and thigh for comfortable movement
- Available in Blue Denim as shown



**BULWARK EXCEL FR CLASSIC
FIT PRE-WASHED DENIM JEAN**

PFRJCF-BWK

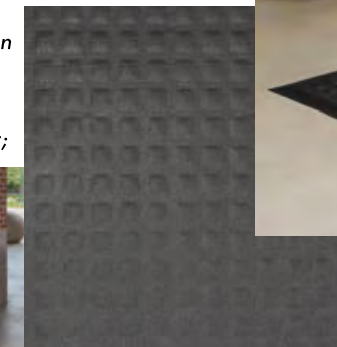
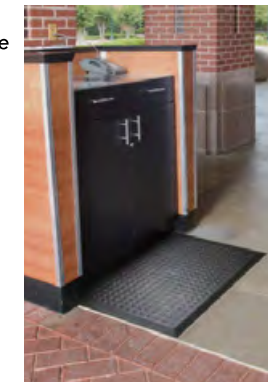
- ATPV 20.7 calories/cm² (CAT 2)
- Flame-Resistant, 14.75 oz. 100% Pre-washed Cotton Denim
- Classic Fit is traditional
- Has slimmer leg opening that will fit over boots
- Available in Blue Pre-washed Denim as shown



Anti-Fatigue
Ergonomic mats and floor tiles reduce fatigue by up to 50%. Anti-fatigue mats help increase blood circulation and reduce pressure on the body's musculoskeletal system. They also reduce foot arch pronation, varicose veins, and pain commonly attributed to standing for long periods of time.

**COMPLETE COMFORT II
ANTI-FATIGUE MAT**

- **Complete Comfort II Mats** are anti-microbial, anti-fatigue mats that can be autoclave sterilized and commercially laundered
- **Comfortable**- 1/2" thick nitrile foam provides superior anti-fatigue properties
- **Clean**- Anti-microbial treatment provides lifetime protection from odors and degradation
- **Safe**- Beveled edges provide a safe transition from floor to mat
- **Versatile**- Grease/oil proof; chemical resistant; welding safe
- **Easy to Clean**- Can be autoclave sterilized
- Available in 2'x3', 3'x5', 4'x6'

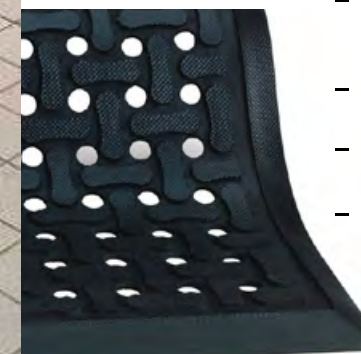


Anti-Microbial
Matting permanently treated with an anti-microbial agent that guards against degradation from micro-organisms and minimizes mats being a source of odors.



COMFORT FLOW MAT

- **Clean** - Drainage holes allow liquid to flow through; lifetime anti-microbial treatment prevents odors and degradation of the mat
- **Safe** - Beveled edges provide a safe transition from floor to mat
- **Comfortable** - High-density closed-cell nitrile rubber cushion provides excellent antifatigue qualities
- **Versatile** - Grease and oil proof; chemical resistant; welding safe
- **Easy to Clean** - Lightweight flexible design ensures easy handling and cleaning
- Available in 3'x5', 3'x9'



Inform Your Visitors With a Message Walkmat

Impress Your Guests With a Personalized Logo Walkmat



MESSAGE MAT

- Available in 3'x4'
- Messages available: Coffee & Safety



CUSTOM MAT

- Digitally printed logo mats reproduce fine detail, fades and 3D Images
- 25 standard colors and over 300 accent colors available
- Static dissipative nylon yard treated with Stain Stopper Technology
- 100% Nitrile rubber backing for increased slip and skid resistance
- Launderable
- Custom Sizes available



"We just got our new LOGO mats from Gunderson's. They look awesome in our lobby and add a real professional look!! Thanks to all of you at team Gunderson's for your great vision and service in putting this together!"

- Mike Kesselhon, owner, Discover Little Miracles Child Care, Neenah, WI

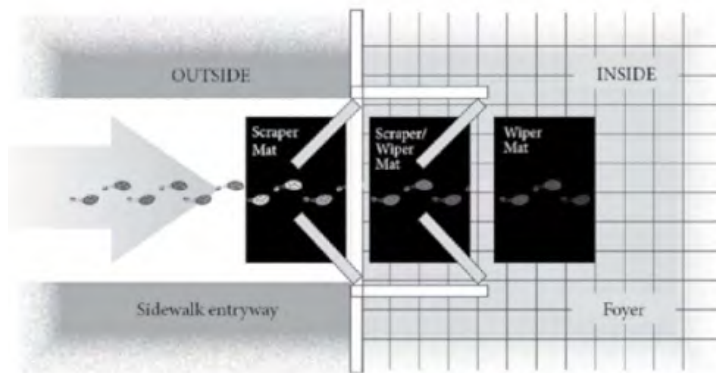


MATS ARE THE FIRST

Mats are the first defense to stop dirt and moisture from entering your building. Mats filter these contaminants from entering the facility, saving thousands of dollars a year in cleaning costs. Mats also protect interior floor surfaces from excessive damage and wear. Entrance mats are the most effective way of stopping dirt and moisture at the door and keeping building maintenance costs to a minimum.

Consider These Facts...

- 70% to 80% of dust, grime and dirt in a building is tracked in from the outside on people's feet—permanently damaging floors
- One square yard of carpet can accumulate one pound of dirt a week—twice that in inclement weather
- It is estimated that the cost to find and remove a single pound of dirt from a building can run in excess of \$600 in cleaning costs. As few as 150 people entering a facility can track in one pound of dirt in a 5 day work week costing over \$30,000 dollars annually to remove.
- By utilizing high performance entrance matting of at least 10' to 15' (as recommend by the U.S. Green Building Council and the Carpet and Rug Institute) you can capture as much as 85% to 95% of contaminants that enter the building, saving maintenance dollars and protecting building assets



1 SCRAPER ENTRANCE MATS YOUR FIRST LINE OF DEFENSE



Scraper
Scraper mats are heavy-duty mats designed to stop mud and larger particles of dirt from being tracked inside buildings.

SCRAPER MAT

- Scraper mats feature molded tread surface cleats that effectively scrape tough dirt and grime from shoes. It's ideal for use outside as a scraper mat or as a slip-resistant mat in wet areas.
- **Clean** - Surface cleats effectively remove and trap dirt and sand below shoe level to prevent tracking
- **Safe** - Slip resistant even in wet environments
- **Suitable for Harsh Environments** - Grease/oil proof; chemical resistant
- **Easy to Clean** - Lightweight flexible design ensures easy handling and cleaning (shake off soil and hose off); can be commercially laundered or autoclave sterilized
- Available in 3'x5', 4'x6'

DEFENSE TO STOP DIRT...

2 BRUSH MATS THE SECOND STEP TO KEEPING DIRT OUTSIDE



Brush
Brush mats provide scraping action and wiping to further stop dirt and moisture from entering a facility. These mats are typically made of tough heavy-duty commercial fabrics. They retain dust in recessed grooves while absorbing moisture in the fabric surface.

BRUSH MAT

- Brush mats feature extra-course nylon fibers blended with traditional nylon carpet fibers. This duo of fibers is designed to create excellent scraping and wiping action for maximum soil-stopping power.
- **Superior Dirt-Stopping Power** – Course nylon fibers scrape and wipe dust and dirt from shoes
- **Resilient** – High-twist, heat-set nylon resists crushing to better trap dirt and extend the useful life of the mat
- **Fade Resistant** – Solution-dyed nylon won't fade in sunlight or with repeated washing; impervious to bleach
- Available in 3'x4', 4'x6', 3'x10', 4'x12'
- Available in Onyx as shown

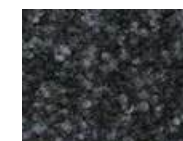
3 CLASSIC MATS THE THIRD WEAPON AGAINST DIRT AND MOISTURE



Classic
Classic mats are designed to stop any remaining dust and moisture. These mats are made with a variety of carpeted surfaces and colors to compliment a wide range of interiors.

CLASSIC MAT

- The classic mat features a slip-resistant rubber backing and an acid-dyed carpet surface designed to stop dust, dirt, and moisture at your door and provide a safe walking surface
- **Resilient** – High-twist, heat-set nylon resists crushing to better trap dirt and extend the useful life of the mat
- **Stain Resistant** – StainStopper technology helps prevent staining
- **Safe** – Certified high-traction. Rubber backing to ensure your mat stays in place on your floor surface



CHARCOAL HEATHER CLASSIC MAT
Available in 3'x4', 4'x6', 3'x10', 4'x12', 4'x18'



GOLDEN BROWN CLASSIC MAT
Available in 3'x4', 4'x6', 3'x10', 4'x12', 4'x18'



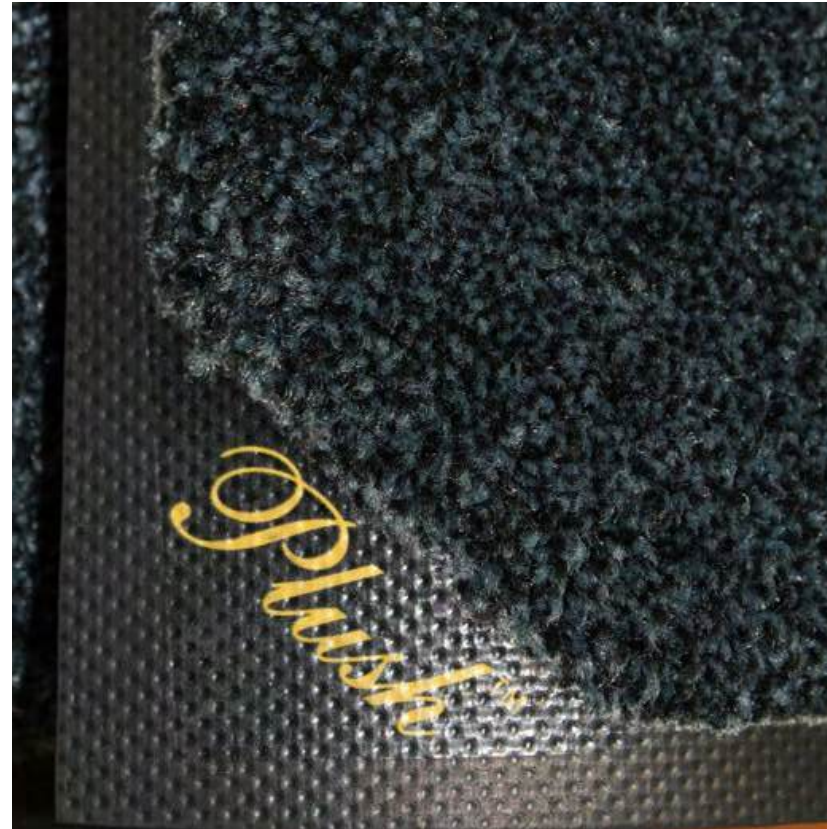
BLACK CLASSIC MAT
Available in 3'x4', 3'x5', 4'x6', 3'x10', 4'x12', 4'x18'

**3 CLASSIC MATS - 90MIL
THE THIRD WEAPON AGAINST DIRT AND MOISTURE**



90 MIL RUBBER HEAVY DUTY MAT

- Plush mats feature a thick, plush carpet pile designed to absorb more moisture than standard mats.
- **Superior Moisture & Dust Control** – Heavier carpet pile absorbs and retains 50% more moisture and dust than standard mats
- **Resilient** – High-twist, heat-set nylon resists crushing to better trap dirt and extend the useful life of the mat
- **Safe** – Certified high-traction; available rubber backing to ensure the mat stays in place on your floor surface
- Available in 3'x4', 4'x6', 3'x10', 4'x12', 4'x18'
- Available in Midnight Gray as shown



**4 LOGO MATS
PROMOTE A POSITIVE IMAGE**



CUSTOM LOGO MAT

- Digitally printed logo mats reproduce fine detail, fades and 3D Images
- 25 standard colors and over 300 accent colors available
- Static dissipative nylon yard treated with StainStopper Technology
- 100% Nitrile rubber backing for increased slip and skid resistance
- Launderable
- Custom Sizes available



GRANULAR FLOOR DRY 25# BAG

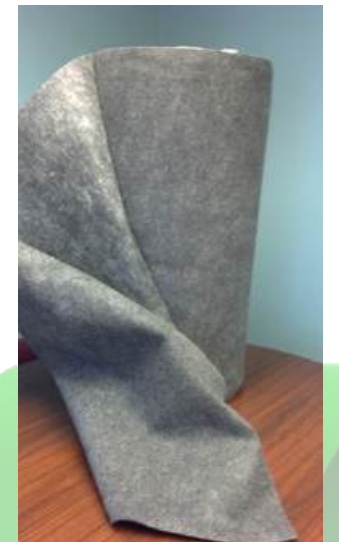


ALL PURPOSE ROLL OF ABSORBENT PADS



SOCKS

NEEDLE PUNCH MATTING



OIL ABSORBENTS & RECYCLING SERVICE SOLUTIONS

- Wide Selection Of Absorbent Products For Spills & Leaks
- Meets ISO 14001 Environmental Continuous Improvement Objectives
- Recovered Oils Are Recycled In A Closed Loop Process For Reuse
- Pick Up & Delivery Included - Purchase Only As Needed
- New Product Delivered Each Time – Lays Flat To Prevent Slip & Fall Injuries
- Eliminate Waste And Abuse Of Under-Utilized Product
- Lower Cost Compared To Launderable Rental Products



GREEN MICROFIBER

- Multipurpose cloths for wet or dry cleaning
- Very Durable
- Can hold 6x their weight in water, much more absorbent than cotton
- Environmentally friendly
- Will have some staining and rough appearance from industrial shop use
- Not suitable for cleaning/absorbing grease/oil based spills
- Available in 12" x 12"
- 100% Microfiber



UTILITY

- Economical
- General cleaning utility towel
- Not for use in machine shops
- Available in 14" x 17"
- 100% Cotton



HAND-I

- Car detail use
- Golf cart cleaning
- Terry towel
- Absorbent
- Dyed, recycled hand and bath towels will have some staining, and will not be perfect
- Available in 15" x 23"



SHOP (GREEN)

- Best choice for messy, shop environments
- Great for grease cleanup
- Low linen management costs
- Will have some staining and rough appearance from industrial shop use
- Available in 14" x 14"
- 100% Cotton



VIRGIN SHOP

- First application/use of the shop towel
- After first use, we consider this the shop towel
- Not ideal for heavily soiled application
- Available in 14" x 14"
- 100% Cotton



PROTECTIVE FENDER COVER

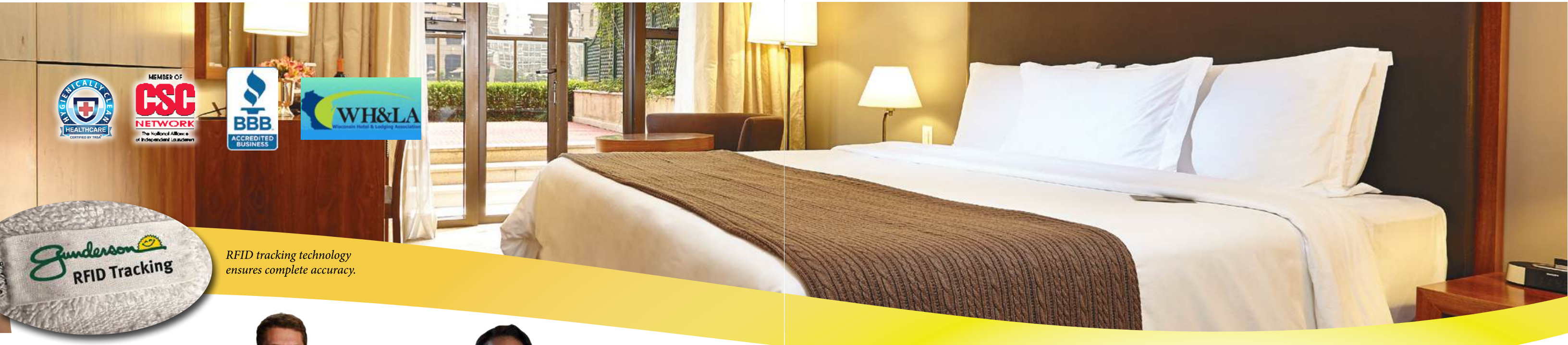


DENIM SHOP APRON

#049PP

- Extra long Denim Full Bib Apron with Pen & Pad Pocket





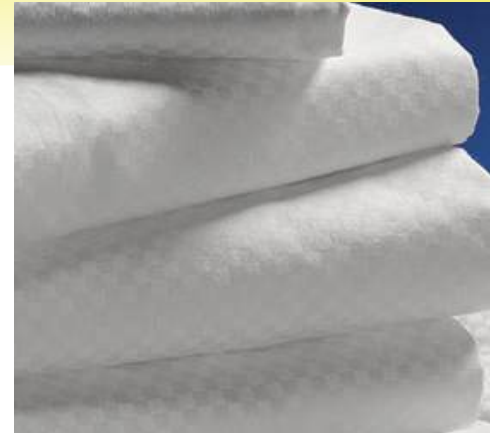
RFID tracking technology ensures complete accuracy.



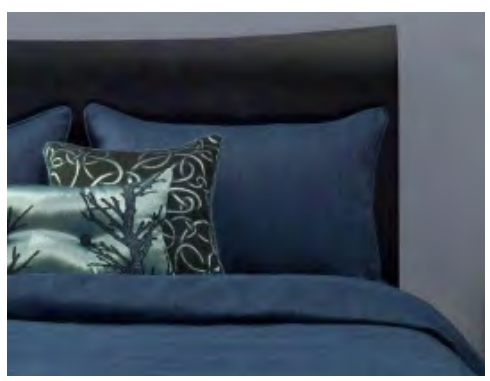
HOSPITALITY SHIRTS



PREMIER LINE 250 THREAD COUNT LINEN



LUXURY LINE 300 THREAD COUNT MICROCHECK LINEN



DUVET & BED SKIRT CLEANING



DRAPE & SHOWER CURTAIN CLEANING



POOL TOWEL



TERRY TOWELS

GIVE YOUR RESTAURANT THE EDGE WITH TABLE LINENS



THE COMPLETE EXPERIENCE

Invigorate your business without affecting your bottom line

- Tablecloths keep your tables clean and help reduce your restaurant's noise level. A recent survey showed that noise level was the #1 complaint by consumers while dining. Our linens are made with SofTouch Technology, which gives a soft feel and limits lint on diners. By using our table linens, you will help give your diners an enjoyable experience.
- 7 out of 10 customers say table linens create a better experience through improved atmosphere, cleaner appearance and reduced noise levels.



"My advice to anyone considering switching to linen is to think long term, go for the linen and reap the benefits. You will have happier repeat customers and an edge over your competitors."

We have been using Gunderson Linen Service for many years now and they have far exceeded our expectations! Gunderson has always offered us great service, personalized attention and has helped make all of our events a huge success.

— Pullmans at Trolley Square, Appleton, WI



The average U.S. consumer uses **3 PAPER NAPKINS** per meal compared to **1 CLOTH NAPKIN.**

"Most restaurants worry about linen costs, I was surprised that business increased and the cost of linens didn't affect our bottom line."





**OFFERS A CUSTOMIZED,
FULL LINEN RENTAL SERVICE**

We have the widest variety of napkin colors available.



75% of U.S. consumers associate tables SET WITH CLOTH with better FOOD QUALITY.

7 out of 10 customers say table linens create a better experience through improved atmosphere, clear appearance and reduced noise levels.

The Widest Selection Available														
Color	Napkins	42 x 42	52 x 52	52 x 72	52 x 114	62 x 62	72 x 72	80 x 80	90 x 90	90 x 156	90 Round	108 Round	120 Round	132 Round
White	✓	✓	✓	✓	✓	✓	✓	✓	✓	✓	✓	✓	✓	✓
Ivory	✓	✓	✓	✓	✓	✓	✓	✓	✓	✓	✓	✓	✓	✓
Sandalwood	✓	✓	✓	✓	✓	✓	✓	✓	✓	✓	✓	✓	✓	✓
Black	✓	✓	✓	✓	✓	✓	✓	✓	✓	✓	✓	✓	✓	✓
Aubergine	✓													
Burnt Orange	✓													
Charcoal	✓													
Chocolate	✓													
Dusty Rose	✓													
Forest Green	✓	✓	✓		✓		✓		✓					
Gold	✓		✓			✓			✓					
Hooters Orange	✓													
Lagoon	✓													
Lemon Yellow	✓													
Maroon	✓		✓		✓	✓	✓		✓					
Medrite Gray	✓													
Navy Blue	✓		✓		✓		✓		✓					
Neon Lime Green	✓													
Peach	✓													
Pink	✓													
Purple	✓													
Raspberry	✓													
Red	✓	✓	✓		✓	✓	✓		✓					
Royal Blue	✓													
Rust	✓													
Seafoam Green	✓													
Teal	✓													
Violet	✓		✓											
Wedgewood Blue	✓													
Wild Raspberry	✓													
Black Bistro	✓													
Red Bistro	✓													
Blue Bistro	✓													
Gray/White Stripe Bistro	✓													
Red Cotton Bistro	✓													
White Cotton	✓													

**36 Colors
107 Size
& Color
Options**



COOK SHIRT WITH SNAPS

SCNP-PIN

- 4 oz. 100% MJS Spun Polyester
- Available in White as shown



CHEF DESIGNS EIGHT KNOT BUTTON CHEF COAT

CCPK-VF

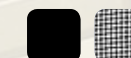
- 7 oz.; 65% Polyester/35% Cotton Twill
- Available in White as shown



COOK PANT WITH ZIPPER FLY

PCK6535

- 7 oz. Twill; 65% Polyester/35% Cotton Yarn-Dyed
- Available in Black, Black/White Check



GRIPPER FRONT BUTCHER COAT

CBCSNP-KS60

- Poplin; 100% Spun Polyester
- Available in White as shown



BUTCHER FROCK/ MEAT COAT

CMSPO-PIN

- 7.2 oz.; 100% MJS Spun Polyester
- 41" Length
- Available in White as shown





HALF SLEEVE CHEF COAT

CCB 1/2-PIN

- 7 oz. Enhanced Ring Spun Twill; 65% Polyester/35% Cotton
- Available in White as shown



CHEF DESIGNS SPUN POLYESTER BAGGY CHEF PANT

PCEW-RK

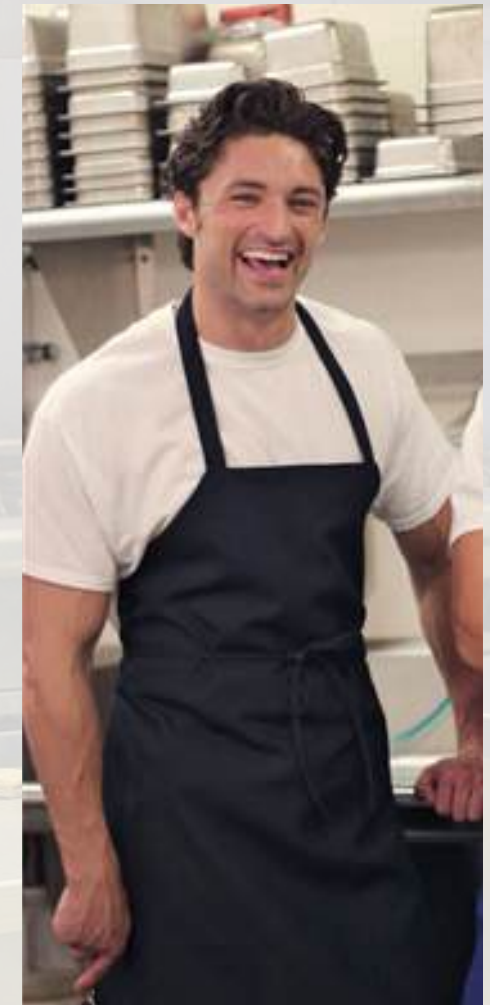
- 7 oz. Twill, 100% Spun Polyester Duraprint
- Available in Chalk Stripe, Black/White Check, Black



FULL LENGTH APRON

BLK: 0012 WH: ABOPL-RK

- 100% MJS Spun Polyester Full Bistro Apron; 6.4 oz.
- Pocket
- Available in Black and White



100% MJS SPUN CHEF COAT

CCB-PIN

- 7.2 oz. 100% Murata Jet Spun Polyester
- Available in White as shown



100% MJS SPUN CHEF COAT

#C330

- 7.2 oz. 100% TITAN Spun Polyester
- Available in White as shown



BIB APRON - NO POCKET

BLK: 0022 WH: 0010

- 6.4 oz. 100% MJS Spun Polyester Bib Apron
- Available in Black and White
- Also available with three pockets, #A5405



WAIST APRON - 3 POCKET SHORT BISTRO

**BLK: 0011 NO POCKET
WH: ABSNP-WHT**

- 100% Spun Polyester; 6.4 oz.
- 23"x11", Three 7"x7" pockets
- Available in Black and White



BAR TOWEL,
Also AVAILABLE IN BLUE FOR
BACK OF THE HOUSE USE



DISH TOWEL



GLASS TOWEL



MICROFIBER TOWEL



**BACK OF THE HOUSE
BAR TOWEL**



Air Freshener



**Pee Pods
DS1**



**Paper Towel Dispenser
DS1**



**Automatic Paper Towel
Dispenser
DS1**



**Toilet Paper Dispenser
DS1**



**CLEANSHEILD DISPOSABLE
RESTROOM MAT DS1**

- 15 oz/sq yd 100% post consumer recycled PET fabric reclaimed from plastic bottles
- Easy to read 30 day Timestrip indicates when to replace the mat
- Improve bathroom appearance by protecting the floor & grout from urine staining



**Soap Dispenser
DS1**



**Foaming Bathroom Soap
DS1**



**Hand Sanitizer
DS1**



MICRO MOP



DUST MOP WITH HANDLE AND FRAME

Available sizes: 18 in, 24 in, 36 in, 48 in



WET MOP WITH HANDLE



MICROFIBER WET MOP WITH HANDLE



XALT CRITICAL COVERAGE SURGICAL GOWNS - LEVEL 4

– The Xalt surgical barrier fabric is comprised of a proprietary membrane laminated between two layers of polyester material to deliver a high level of protection and breathability



XALT PANEL COVERAGE SURGICAL GOWNS - LEVEL 3

– The Xalt surgical barrier fabric is comprised of a proprietary membrane laminated between two layers of polyester material to deliver a high level of protection and breathability



1-PLY BLOCKADE SURGEONS GOWNS - LEVEL 2

– Constructed of 99% Polyester with 1% Carbon to help dissipate static electricity.
– Available in Ceil Blue as shown

WRAP AROUND REUSABLE ISOLATION GOWN - LEVEL 1

– Easy on and off! No snaps or ties – Available in Yellow and Gray



Purchase Your Lab Coats From Us.

We Will Professionally Dry Clean and Deliver Your Coats to You.

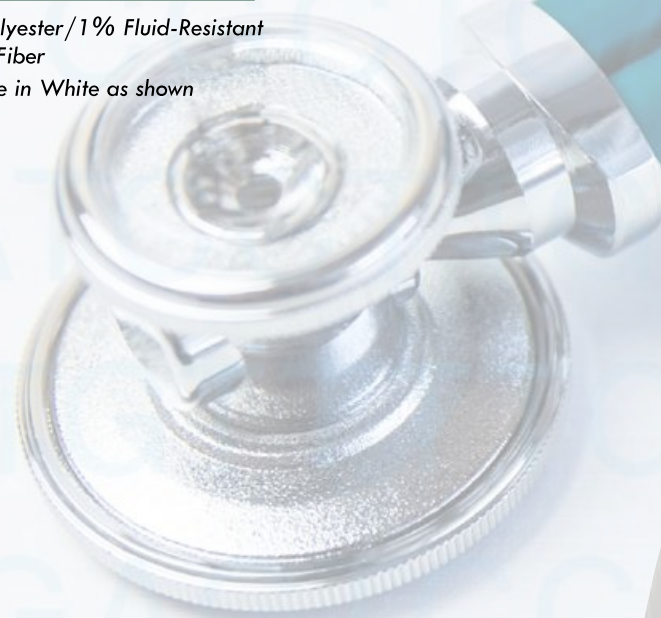


MEN'S RESISTAT LAB COAT WITH POCKETS

- 99% Polyester / 1% Fluid-Resistant Carbon Fiber
- Available in White as shown

LADIES' FULL LENGTH WHITE COAT DS1

- 80% Polyester / 20% Cotton Poplin
- Available in White as shown



MEN'S FULL LENGTH WHITE COAT DS1

- 80% Polyester / 20% Cotton Poplin
- Available in White as shown



MEN'S POPLIN STAFF LENGTH WHITE COAT DS1

- 80% Polyester / 20% Cotton Poplin fabric that's designed to resist wrinkles
- 39" Length
- Available in White as shown



OPERATING TOWELS

- 100% Cotton Yarns



INTERBLEND TOWELS

- 85% Cotton / 15% Polyester
- Available in White as shown



BATH BLANKETS

- 82% Cotton / 18% Polyester



INTERBLEND BATH TOWELS

- 85% Cotton / 15% Polyester
- Available in White as shown



PERFORMAX IV PATIENT GOWNS

- PerformMAX™ Polyester



HERRINGBONE SPREAD BLANKETS

- 55% Cotton / 45% Polyester
- Measures 70" x 108"



PEFORMAX PILLOWCASES

- 100% Synthetic Fibers



**INTERBLEND PERCALE
FLAT SHEETS**

- 55% Cotton/Polyester Percale fabric



PERFORMAX FITTED SHEET

- 100% Synthetic Fibers



SOFT-SPAN BIRTHING SHEETS

- 55% Combed Cotton/41% Polyester
4% Spandex



**KUDDLE-UP FLANNEL
BABY BLANKETS**

- All-cotton, flannelized blanket



SPECTRUM SPREAD BLANKETS

- 55% Cotton / 45% Polyester Blend
- Measures 74" x 104"



RESISTAT UNIVERSAL DRAPES

- Used in procedures requiring isolated exposure



**RESISTAT ANGELSTAT 2-PLY
STERILIZATION WRAPS**

- 1-ply Fluid-Resistant 99% Polyester,
1% Carbon Fiber Material, 1 ply Preshrunk
AngelStat 55% Cotton / 45% Polyester
- Available in Ceil Blue as shown



REUSABLE UNDERPADS

- Cutting-edge barrier technology that helps improve
your ability to control risk factors for breakdown
including moisture, pressure and heat.



If you prefer...

You Can Purchase

Decorated Items Too!



Call Us Today
(920)
720-3433

It's Easy as 1-2-3!

1 Choose your items, we have thousands to choose from. Here are just some of our suppliers:



2 Give us your art to get your logo set up. We can embroider or screen print all your items.

**If you don't have art, our designer can help you with that too!*

3 Choose your logo location and **YOU ARE DONE!** We'll take care of the rest!





Complete Linen & Uniform Services
Wisconsin Based Family Company

41 Main St, | 16265 West Lincoln Ave
Menasha, WI | New Berlin, WI
920.727.4000



Full Service Laundry & Dry Cleaning
Serving the Fox Valley, Waupaca & Wausau

200 W. Wisconsin Ave, Appleton, WI
920.730.3300



Embroidery, Screen Printing, Promotional
Items, Custom Design

268 Sanford St, Menasha, WI
920.727.4000



Specialty Cleaning & Fabric Restoration
24/7 Emergency Services Across WI

268 Sanford St, Ste. A, Menasha, WI
920.886.3631